



Chestnut Avenue, London, E7

BUTLER & STAG



Price Guide £550,000 - £585,000
Nestled away in a private, gated development off a quiet one-way street, this three-bedroom contemporary mews house offers the perfect blend of modern living and tranquillity, all while being just moments from Wanstead Park Station.



Freehold

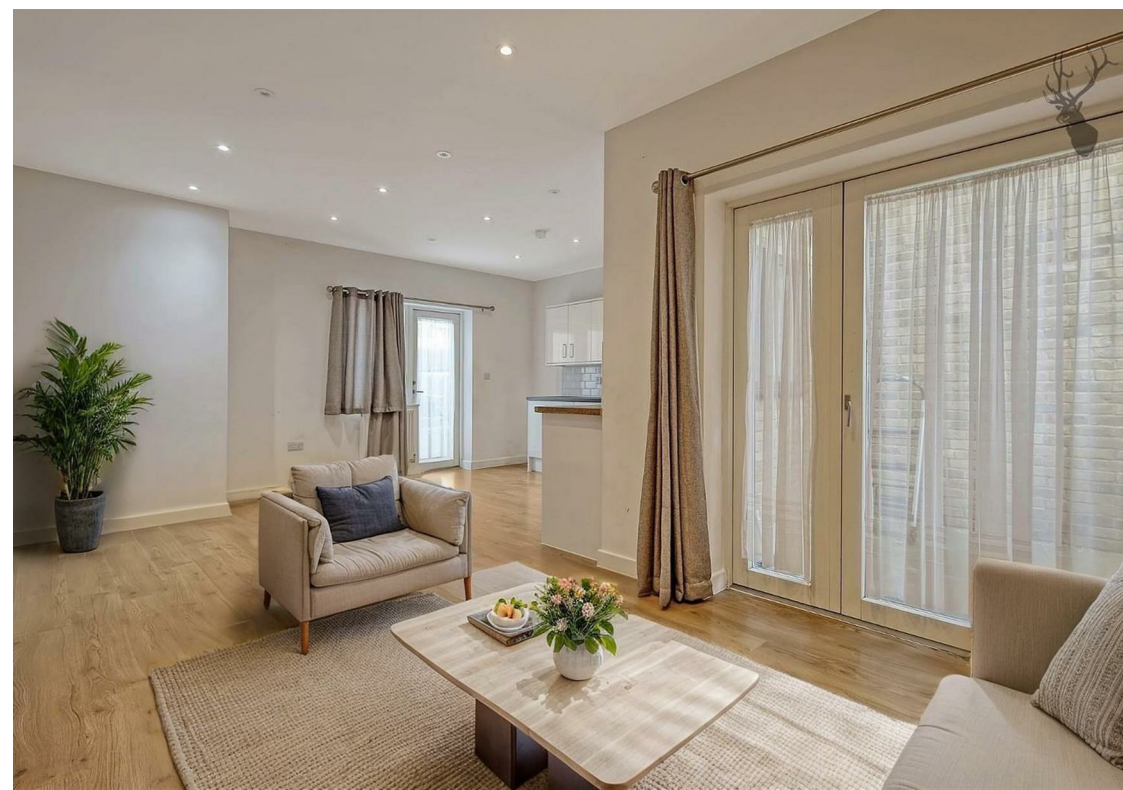
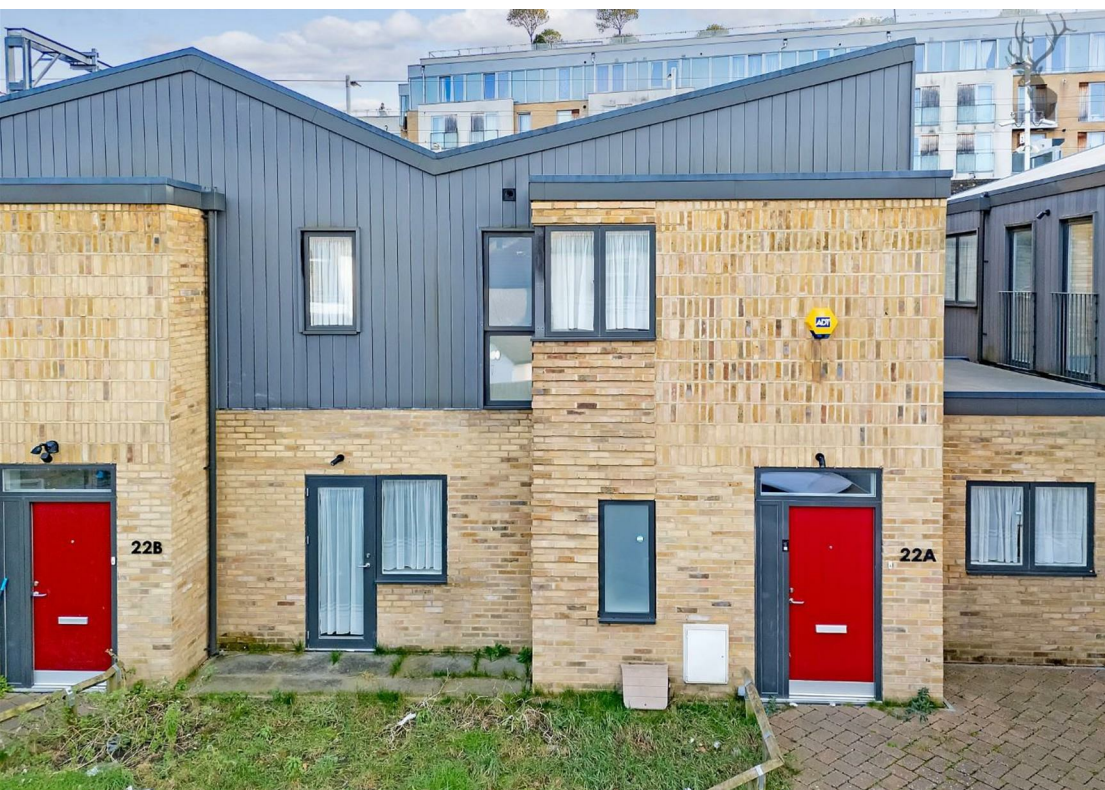
- Two Storey (Freehold) House Set Within A Gated Development
- Three Well Proportioned Bedrooms
- Open Concept Living
- Gated Parking
- Front Garden and Private Patio Area
- First Floor Bathroom
- 976 Sq/Ft Internal Living Space
- Down Stairs Toilet

Designed with style and functionality in mind, the property boasts a bright and spacious open-plan living area, featuring sleek finishes and high-quality fittings throughout. The modern kitchen is equipped with premium appliances, ample work surfaces and storage, ideal for both casual dining and entertaining.

The three well-proportioned bedrooms provide comfortable living spaces. Large windows ensure an abundance of natural light, while a modern bathroom features elegant fixtures and fittings.

Set within a secure and exclusive gated development, this home offers privacy and a sense of community, with well maintained communal areas adding to its appeal. Despite its peaceful setting, you're just a short walk from the green spaces of Wanstead Flats and have excellent transport links nearby, making this the ideal residence for professionals and families alike.





Chestnut Avenue

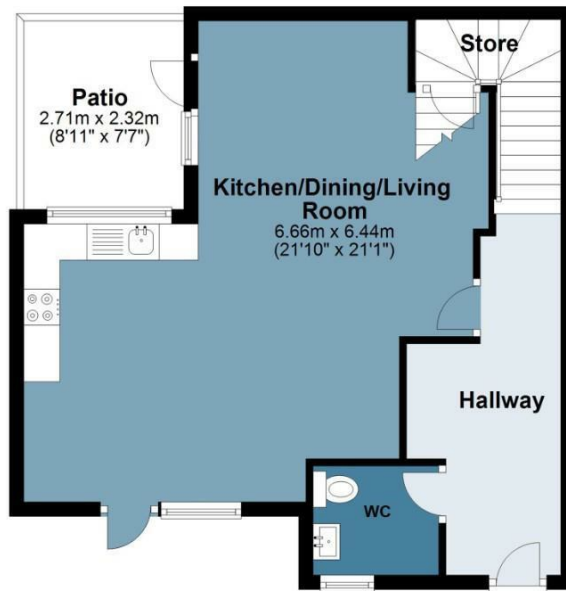
Approx. Gross Internal Area 90.9 Sq M (978.2 Sq Ft)

BUTLER & STAG



Ground Floor

Approx. 46.2 sq. metres (497.0 sq. feet)



First Floor

Approx. 44.7 sq. metres (481.1 sq. feet)



Measurements are approximate and for illustration purposes only. While we do not doubt the accuracy and completeness, we advise you conduct a careful independent assessment of the property to determine monetary value.
© @modephoto.uk www.modephoto.co.uk

IMPORTANT NOTICE - These particulars have been prepared in good faith and they are not intended to constitute part of an offer or contract. We have not performed a structural survey on this property and the services, appliances and specific fittings have not been tested. All photographs, measurements, floor plans and distances referred to are given as a guide and should not be relied upon.

BUTLER & STAG

☎ 020 8102 1236

🏠 508 Roman Road, Bow, London, E3 5LU

✉ bow@butlerandstag.com

www.butlerandstag.uk